

*Swift Current
Fire Department
2015 Annual Report*

Table of Contents

<i>Front Cover</i>	
<i>Table of Contents</i>	2
<i>City Profile</i>	2
<i>Vision Statement</i>	3
<i>Message from Chief</i>	4
<i>Employees</i>	5
<i>Appointments</i>	5
<i>Auxiliary</i>	6
<i>Resignations</i>	7
<i>Awards</i>	7
<i>Major Accomplishments</i>	7
<i>Future Initiatives</i>	7
<i>Emergency Management Office</i>	7
<i>Public Education & Community Safety</i>	8
<i>Certifications</i>	9
<i>Community Involvement</i>	10
<i>Sick Time in Days</i>	11
<i>Total Call Volume</i>	11
• <i>City Fire Calls</i>	12
• <i>Per month</i>	12
• <i>Per day of week</i>	13
• <i>By Time of Day</i>	13
• <i>By Incident Duration</i>	13
• <i>7 Minute Response Time</i>	14
• <i>Overlapping Calls</i>	14
<i>Alarm Level</i>	15
<i>False Alarms</i>	15
<i>Annual Losses Due to Fire</i>	16
<i>Value of Property Saved</i>	16
<i>Rural Responses</i>	16
<i>EMS Incidents</i>	
• <i>Per month</i>	17
• <i>Per day of week</i>	17
• <i>By Time of Day</i>	18
• <i>EMS Incident Duration</i>	18
<i>Budget</i>	19
<i>Apparatus</i>	20
• <i>Engines 3 & 2</i>	20
• <i>Ladder 2, Tanker 2</i>	21
• <i>Rescue 2, Command Vehicles</i>	22
• <i>Support Vehicles</i>	23
• <i>Historic Apparatus</i>	24
<i>Back Cover</i>	



City Facts

Population (Sask. Health):	17,990
Altitude:	2,436 ft
Average Summer Temperature:	16°C
Average Winter Temperature:	-9°C
Average Hours of Sunshine:	2,200 hours
Average Annual Precipitation:	361 mm

Swift Current Fire Department

VISION

Safeguarding our community through prevention and protection

MISSION

We are a composite fire department that delivers quality fire, rescue and pre-hospital medical services to our community and neighbours using progressive methods while pursuing a high standard of integrity and professionalism.

VALUES

- Integrity
- Accountability
- Well being of residents
- Continuous learning & development
- Cost effectiveness in all we do
- Creativity
- Excellence in customer service
- Empowerment

Fire Chief's Message



Citizens of Swift Current:

It gives me great pleasure to present to you Swift Current Fire Department's annual report for the 2015 year. Although municipal and provincial growth has continued to increase the demand for our services, we are also affected by the economic downturn that is impacting everyone in Canada. This year was a record year in terms of requests for emergency services as well as our fire prevention and public outreach activities. We are seeing increased calls across all emergency services that we provide and this is causing more cases of concurrent calls where we have to split our crews or call back off duty staff. It is also

making it more difficult to meet our response time goals. On the positive side, the number of incidents that represented an actual fire continues to remain fairly even with the only real increase being grass fires which were a result of the dry summer weather.

Our public outreach programs continue to pay dividends and make our community one of the safest communities in the province. Every citizen of Swift Current can take some credit for this as it is your support of our fire prevention initiatives that make our community safe. City Council has set a goal in *"The Next 100 Years"* that Swift Current will be *"A Safe and Caring Community"*. I believe we achieve this goal every day – we have a safe community in which to live, work, and play. Thank you for your ongoing support of your fire service.

A handwritten signature in black ink, appearing to read 'D. Pilon', written in a cursive style.

Denis M. Pilon, CD, CFO
Fire Chief

ADMINISTRATION



Denis Pilon – Fire Chief, CD, CFO, Pete L’Heureux – Deputy Fire Chief of Prevention, Darren McClelland – Deputy Fire Chief of Operations, Rhonda Winter – Administrative Assistant

Appointments

- Doug Leibel - Firefighter
- Keith McLeod - Firefighter
- Karla Cairns - Auxiliary Firefighter
- Jason Holderbein - Auxiliary Firefighter
- Dione Hunter - Auxiliary Firefighter
- Justin Kehler - Auxiliary Firefighter
- Bret Neuman - Auxiliary Firefighter
- Joel Rogers - Auxiliary Firefighter

4 Platoons, 2 shifts per day
(08:00 – 18:00 hours and 18:00 – 08:00 hours)

A PLATOON



Rod Smith – Captain, Ryan Hunter – Acting Captain, Jim Green – Firefighter, Doug Leibel – Firefighter

B PLATOON



Greg Campbell – Captain, Trevor Braun – Acting Captain Mark Galbraith – Firefighter, Regan Darby – Firefighter

C PLATOON



Rick Anderson – Captain, Kent Silbernagel – Acting Captain Chris Haichert – Firefighter, Keith McLeod – Firefighter

D PLATOON



Jerry Funk – Captain, Earl Braun – Acting Captain Cody Yolland – Firefighter, Aaron Stewart – Firefighter

AUXILIARY



Back Row: Scott Sundquist, Joel Rogers, Jason Holderbein,
Justin Kehler, Todd Condie, Karla Cairns, Bret Neuman, Pat Thibault
Front Row: Andrew Purcell, Bailey Habscheid, Dione Hunter,
Gord Frank
Missing: Darcy Henderson, Darvin Giesbrecht, Shayne Powell,
Scott Francis, Trent Meyer

Auxiliary Firefighters

One of the most cost effective fire protection models is that of a composite fire department. It provides the quick response of full time firefighters complimented with volunteer firefighters. The composite fire department model couples career full time firefighters, who man the department 24/7 responding to emergency calls, providing fire prevention and inspections services, and maintaining the facilities and equipment operated by the fire department.

The auxiliary firefighters are essentially paid-on-call firefighters who have full time jobs elsewhere but train alongside the career members and respond to incidents when needed.

Four auxiliary firefighters are assigned to each full time platoon. The duty Captain can call his auxiliary firefighters to any scene to increase man power as needed.

Over the years we have changed the scope of our auxiliary firefighters. It is our belief that if we expect them to respond to fire scenes and work alongside our full time firefighters, they must be trained to the same standard. These philosophies have placed a high level of commitment on our auxiliary members to attend numerous training sessions and are required to be on call to attend emergency calls when needed. With the increase in their level of training our auxiliary members are now qualified for future career positions in our department or other municipal fire services.

2015 was full of changes within our auxiliary staff, we had 3 members leave to further their careers elsewhere, 2 members were hired as career firefighters within our department and 3 taking the Primary Care Paramedic program offered by Saskatchewan Polytechnic. With the vacant positions we hired 6 new members that are currently taking training to achieve their Basic Firefighter Certificate Level I & II NFPA 1001, NFPA 472 and ICS 100.

Resignations

Wyatt Evans - Firefighter

Dillon Friesen - Auxiliary Firefighter

Perry Hermanson - Auxiliary Firefighter

William McKeiver - Auxiliary Firefighter

Awards

SUMA Meritorious Service Award

Ryan Hunter - 20 years

Rhonda Winter - 20 years

Major Accomplishments

- The Swift Current Fire Department hosted a very successful conference of the Saskatchewan Association of Fire Chiefs in April, which brought more than 400 people to the City for 4 days.
- Review of our municipal emergency plan and development of a strategic plan for redevelopment of the emergency plan moving forward.
- Started work on a Fire Master Plan
- Hosted the first of three week long training courses in fire investigation.
- Trained ½ of our staff in small watercraft operation and safety and all of our members in water rescue safety.

Future Initiatives

- Re-write of the Municipal Emergency Plan and training of key personnel in the operation of the Emergency Operations Center.
- Re-write the Fire Protection Bylaw and the Emergency Planning Bylaw to align with current legal requirements and practices.
- Present the Fire Master Plan to City Council for approval.
- Complete the fire investigation training for all senior members.

Emergency Management Office

- EMO coordinator attended the Disaster Forum 2015 in Banff, Alberta in the spring.
- Brought ERMC to the table in Swift Current to review our Emergency Plan and develop a strategic plan to bring us into the Incident Command System.
- Worked with Infrastructure and Operations and Fire Dept with ice jams in the spring.
- EMO coordinator and two deputy fire chiefs attended the Sask Emergency Planners Association annual conference and AGM in Saskatoon in November.
- Completed our municipal Hazard Risk and Valuation Assessment (HRVA) in August.
- We developed a specific event emergency plan template and used it for the Rogers Hometown Hockey event.
- One municipal employee completed the Emergency Planning Certificate course from JIBC and three employees continued the course with targeted completion in 2016.

Public Education and Community Safety

Each and every year our crews and administrative team spend considerable time and effort in creating and maintaining public education and community safety initiatives. These efforts take a number of forms and we are often gauged on that success by the major programs we deliver or statistical improvements in call volume instead of acknowledging the spontaneous act of compassion and acts of humanity. All of these moments and initiatives combine to educate our neighbors and provide a safe community.

Smoke Alarm Program –

Our long running smoke alarm program continues to be a successful community safety initiative. Each year the on duty crews go door to door in their assigned districts testing and installing smoke detectors as well as replacing dead batteries. This is all completed at no direct cost to the resident. 2015 marks the completion of eight years of the door to door campaign and the second time we have covered the entire City of Swift Current. Although there is some increase in public awareness we are still finding residents without working smoke detectors, due to batteries overdue for replacement, missing batteries or old detectors. This initiative will continue into the future as smoke alarms are the simplest and most cost effective way to warn people of a fire in their home. In 2015 the department covered 1031 homes in the area North of the Number 1 Highway.

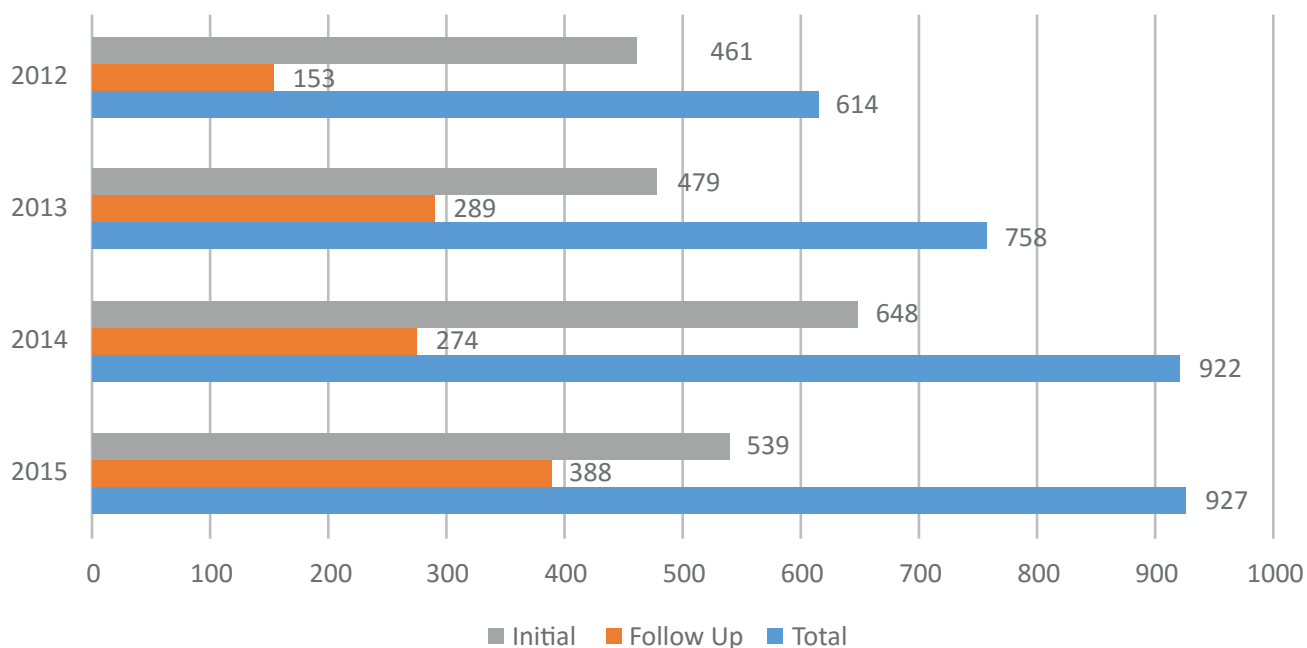
Public education and tours –

The Fire Department continues to provide tours to schools, clubs and early learning center programs throughout the year. We use these station visits as an opportunity to create a learning opportunity for our visitors while keeping the tours and information age appropriate. In addition to our station tour and visits we also provide education for groups and associations outside the fire hall including fire extinguisher training, emergency evacuation orientations and assistance in reviewing building evacuation plans and general fire safety education.

Fire Prevention Week –

Swift Current Fire Department continues to participate in the annual fire prevention week campaign, held October 4-10, 2015. We continue to use this week as the main kickoff to the National theme. Our program uses school activities, student grab bags with fire prevention themed items and a home escape plan activity. Our main event of the week, is a draw for a list of prizes, in particular each school draws for a student to receive a ride to school in a fire truck and another to be fire chief for the day. Both of these events are very popular with the students.

Inspections By Year



Media Campaign –

Our media campaign is directed to involve not only multiple age groups but multiple media types to reach the greatest number of people in the community. We are using traditional methods of radio advertising and newspaper articles and newer, modern methods of twitter, and facebook to get safety information out to the public. We are also engaging the community in general interest pieces about our staff and incidents, with the hopes of educating people about safety in an indirect method.

Occupancy Inspections –

Building inspections are conducted by the on duty crews and the Deputy Chief of Prevention. The inspections are separated into residential, commercial / industrial, and high risk, with the residential being completed every year and all other occupancies being completed every other year. Crews receive a monthly allotment of inspections to complete as well as the follow up inspections to ensure compliance with the National Fire and Building Codes.

Certifications

In 2015 the department has been certified in these courses:

Fire Certificates	# of Firefighters
Fire Officer Level III NFPA 1021	1
Fire Officer Level IV NFPA 1021	3
Fire Service Inspector NFPA 1031 Level I	2
Fire Service Inspector NFPA 1031 Level II	2
Fire Service Instructor NFPA 1041 Level I	2
Emergency Management	1
MED A3 (Water Rescue Safety)	16
SVOP (Small Vessels Operator)	8
Canadian Center for Occupational Health and Safety (WHMIS)	19
Fire Alarm Systems	1
Advanced Fire Investigation	2
Display Fireworks/Pyrotechnics	2
Respect in Sport for Activity Leaders	19
Dale Carnegie	1

EMS Certificates	# of Firefighters
Heart & Stroke Foundation CPR Instructors	12
Emergency Medical Technician	18
PCP Upgrader	2

The Swift Current Fire Department takes pride in the training and certification of its firefighters. This year the only training that was offered to all members was the water rescue safety course. With the turnover of senior staff starting to take affect we are having to bring our newer members up to the equivalent level of the rest of our department, this is something that will continue over the next couple years. This does not mean the rest of our staff are not training as they may be involved in individual courses and are also required to complete education credits for previously acquired certifications. All things being said all members were kept busy with different levels of training.

Community Involvement

The Swift Current Firefighters Charitable Foundation donated around \$13,000 throughout the year of 2015. Most of the donations were local to things including:



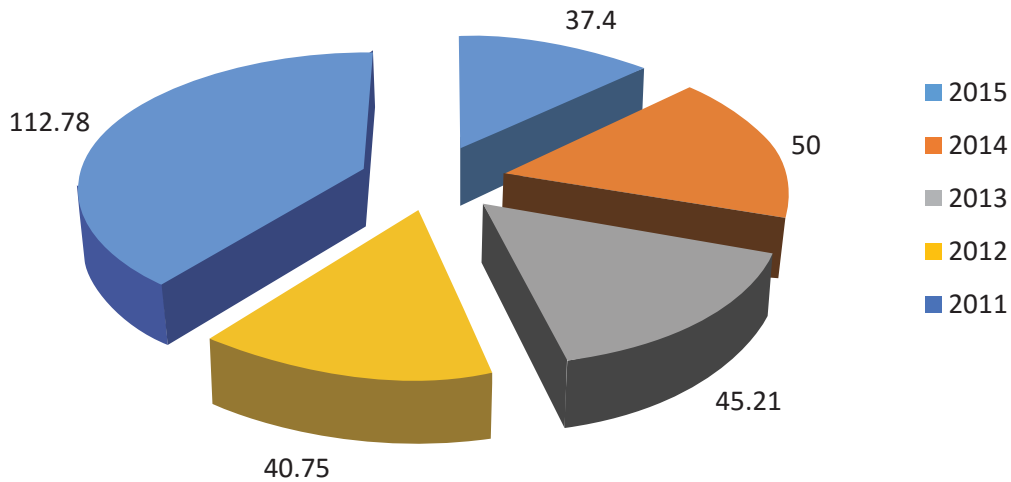
- Salvation Army Christmas Campaign
- Kids in Safe Seats
- Royal Canadian Legion
- Swift Current Minor Football
- Swift Current District Music Festival
- Dr. Noble Irwin Foundation
- Burn Fund
- Various Local Families
- Muscular Dystrophy Canada
- West Bank Bible College
- Southwest Victims Services
- Juvenile Diabetes Association
- Cancer Society
- Dry Grad (Swift Current Comp School)
- MS Society
- 2 local Preschools
- Saskatchewan Fallen Police Officers
- The ALS Association
- Raised Over \$17,500
- Donated Over \$13,000

The Tye Variety Show is a major fundraiser for the Swift Current Firefighters Charitable Foundation. The event is family orientated providing free tickets to all elementary school children by the local individuals and business to enjoy an evening of comedy, illusions and juggling. This fundraising effort has been ongoing for approximately 30 years with annual net proceeds in excess of \$7,000. Proceeds stay within the community meeting local immediate needs and benefiting established charities.

The Foundation wishes to thank the administration for their support of the Tye Variety Show helping to make it possible to raise money for local needs.

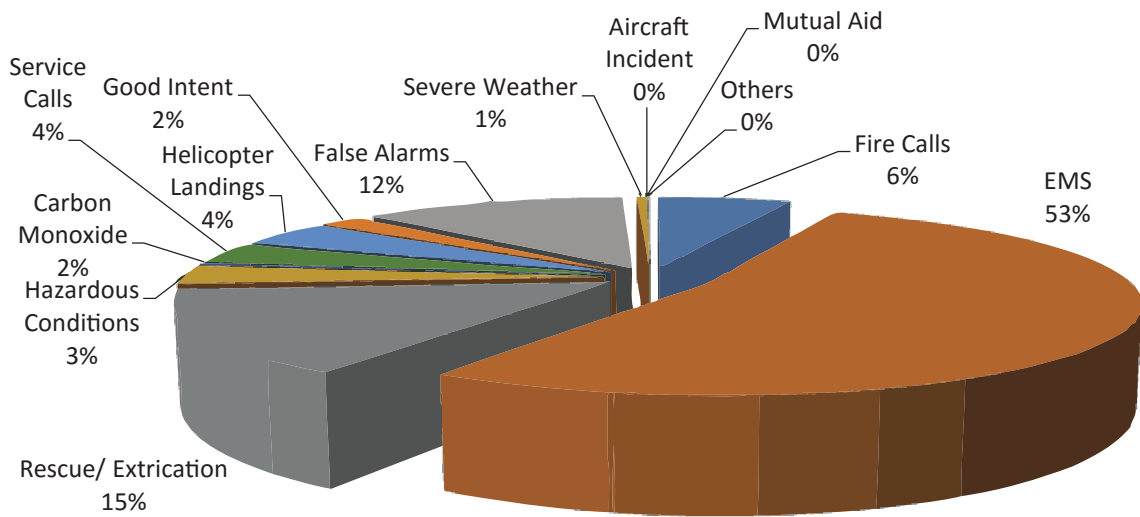
The Charity partnered with the Dr. Noble Irwin Health Care Foundation and Swift Current Ambulance for an Annual Charity Golf Tournament to raise funds for the Dr. Noble Irwin Health Care Foundation and SPFFA Burn Fund. The 8th Annual Golf Tournament organized June 2015 was a great success, raising over \$7,500 for the charity which went towards the Saskatchewan Professional Firefighters Burn Fund.

SICK TIME IN DAYS



Fire Department personnel are very frugal in the use of their sick leave benefits. 2011 was the result of some major illnesses and off-work injuries. Other years are very static in the use of sick time.

TOTAL CALL VOLUME

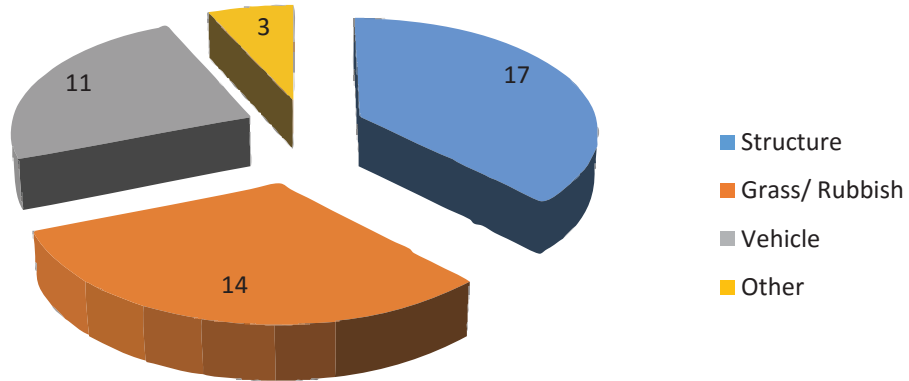


INCIDENT TYPES

In 2015, EMS support calls continued to be the largest portion of response calls at 53% followed by Rescue/Extrication calls at 15% and False Alarms at 12%. Actual fire related calls was only 6% of our emergency responses which equates to 51 actual fires. Of these, 6 were rural fire calls.

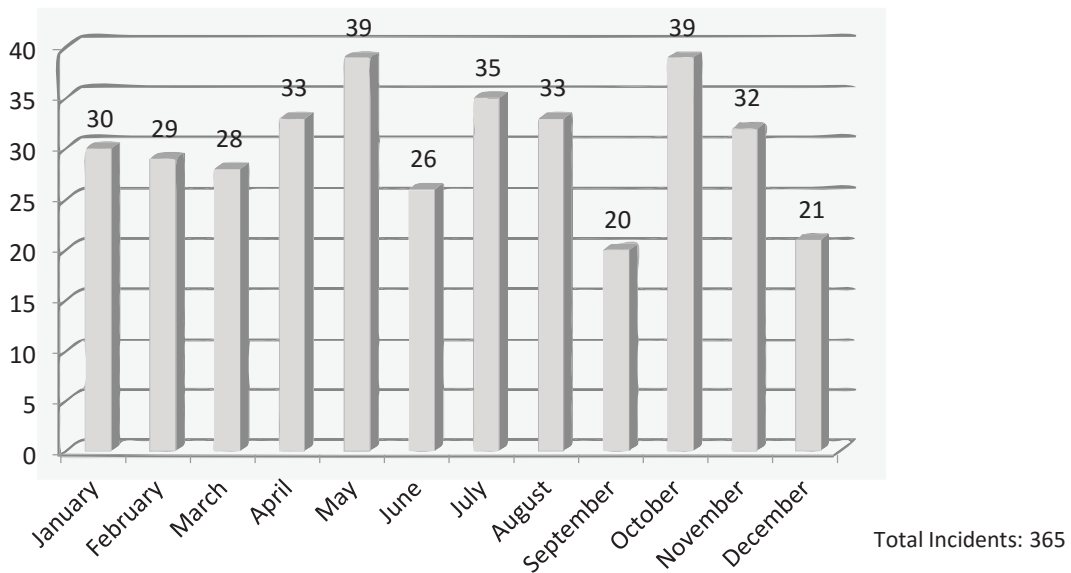
FIRE RELATED INCIDENT RESPONSES

CITY FIRE CALLS



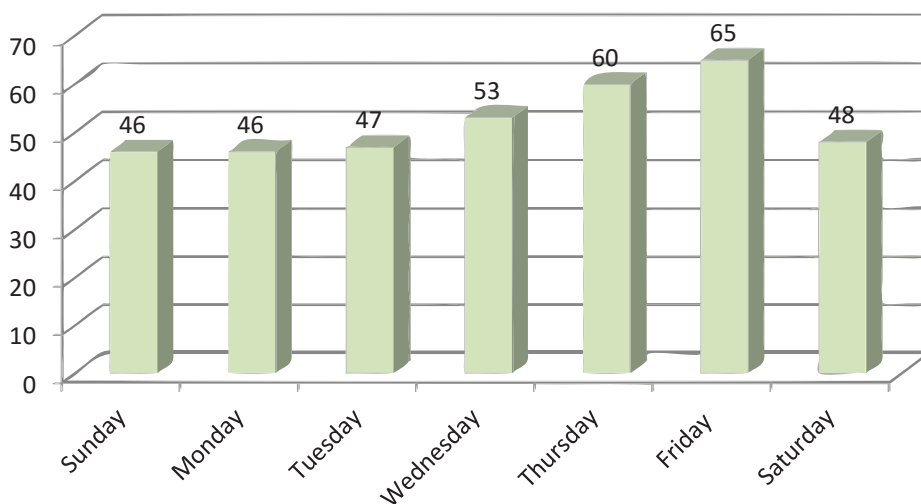
In 2015, we responded to a total of 45 actual fire situations in the City. The grass and rubbish fires are up considerably due to the extreme dry year in which we issued a total fire ban in the city. Structural fires were up slightly with the major increase being a series of arson fires in January.

FIRE INCIDENTS BY MONTH

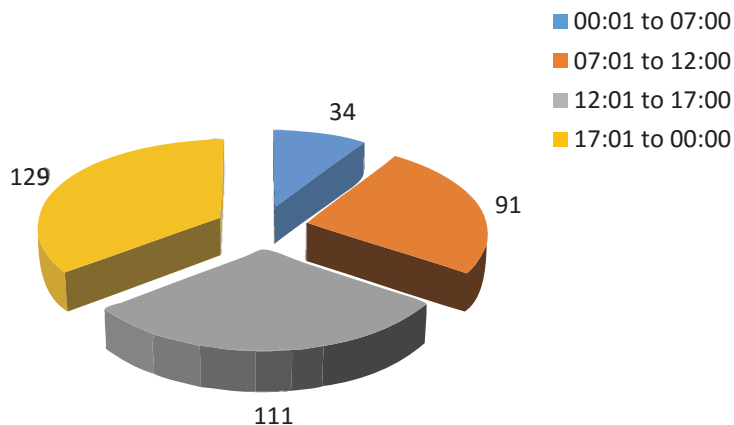


Fire incidents occur every month of the year and show no particular pattern.

FIRE INCIDENTS BY DAY OF WEEK

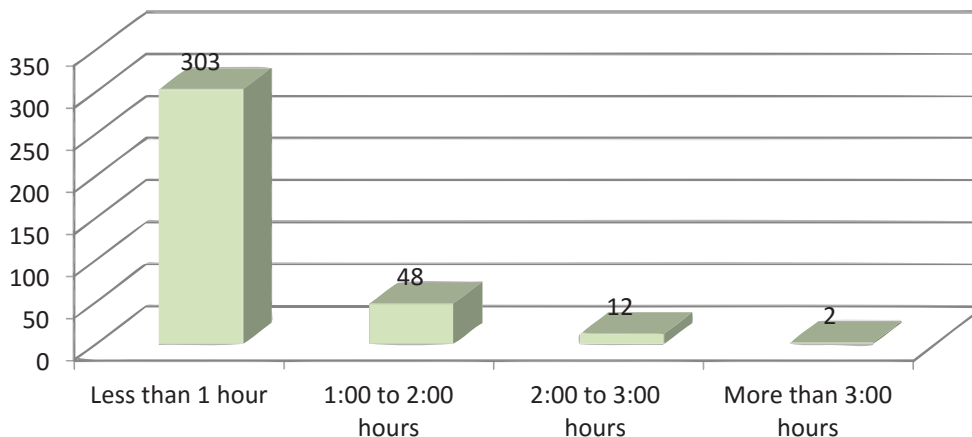


FIRE INCIDENTS BY TIME OF DAY



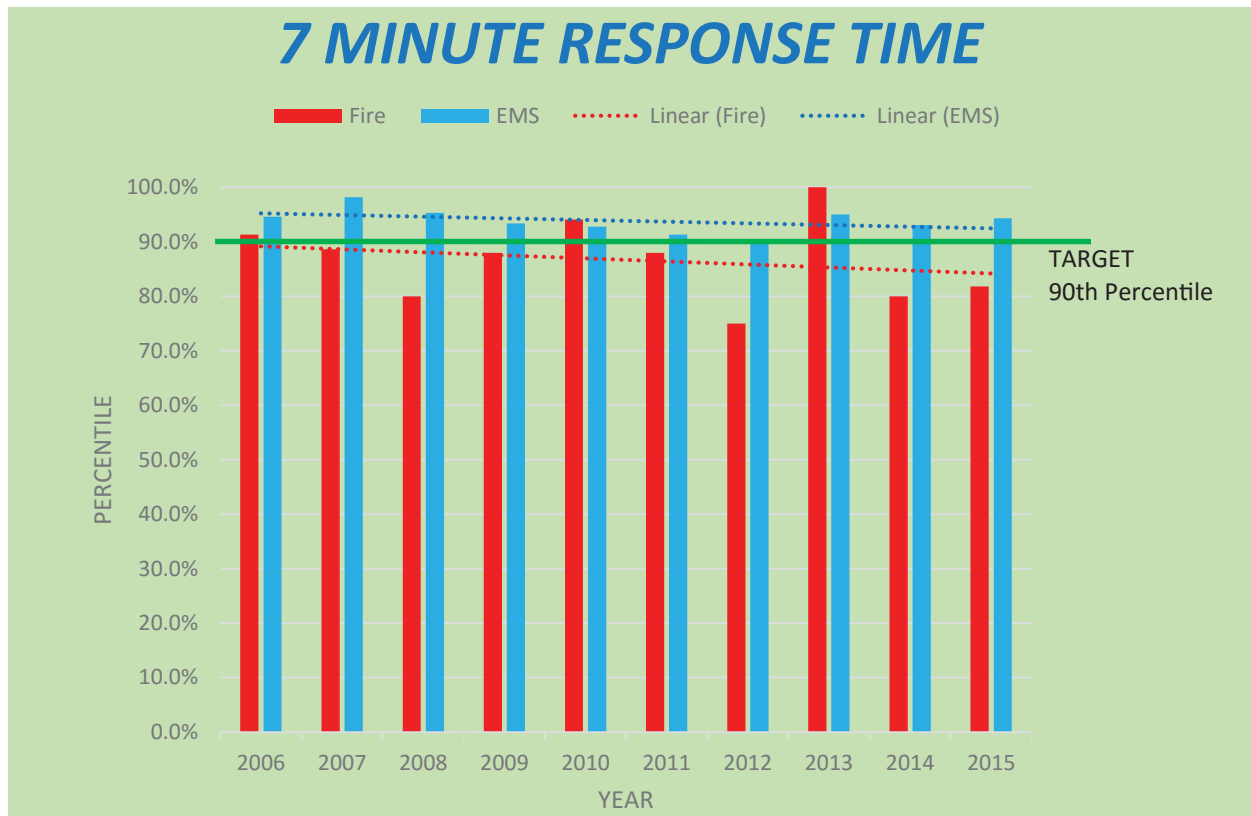
Fire incidents occur at all times of the day or night and during every day of the week. In 2015, we noticed a small increase as we approach the weekends but a major drop on the weekends. The largest number of fire related incidents continue to occur between noon and midnight.

FIRE INCIDENT DURATION



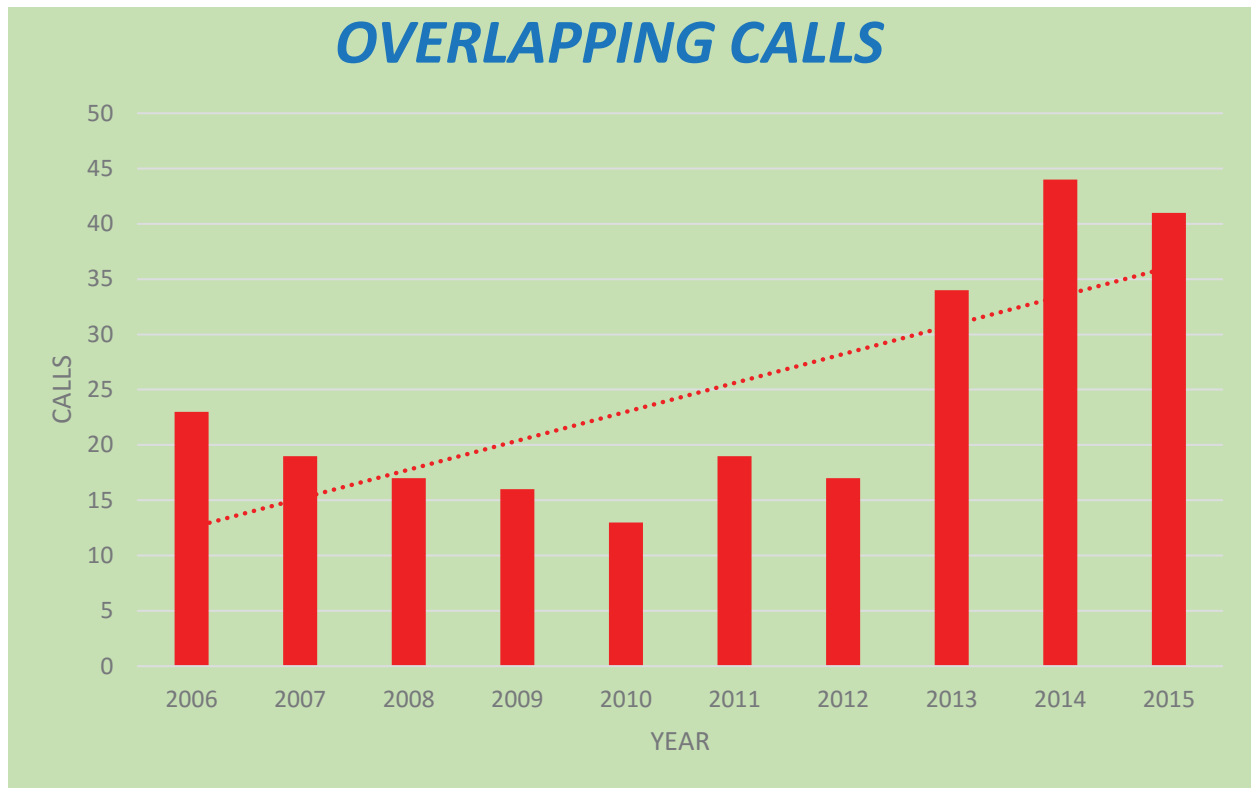
The amount of time actually spent at the scene of a fire related incident is relatively short as most incidents can be managed very quickly if we arrive on scene on a timely manner.

7 MINUTE RESPONSE TIME



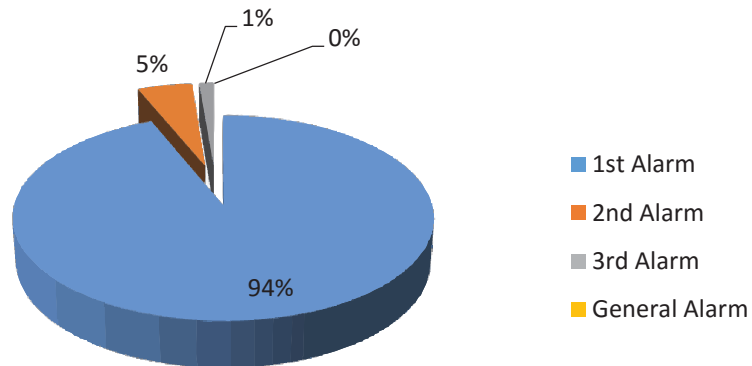
Our response time target is a 7 minute or less response time to have the first engine company on scene. We are able to meet this regularly for EMS calls but not for fire. Analysis shows that the small number of actual fire calls skews the results away from the targets. It should also be noted that many of our fire related calls are responded to in a non-emergency manner without lights and sirens. The critical factor is the downward trend line which appears to reflect growth in the outer areas of the community. This does not include the 3 minute time to set up and initial fire attack.

OVERLAPPING CALLS



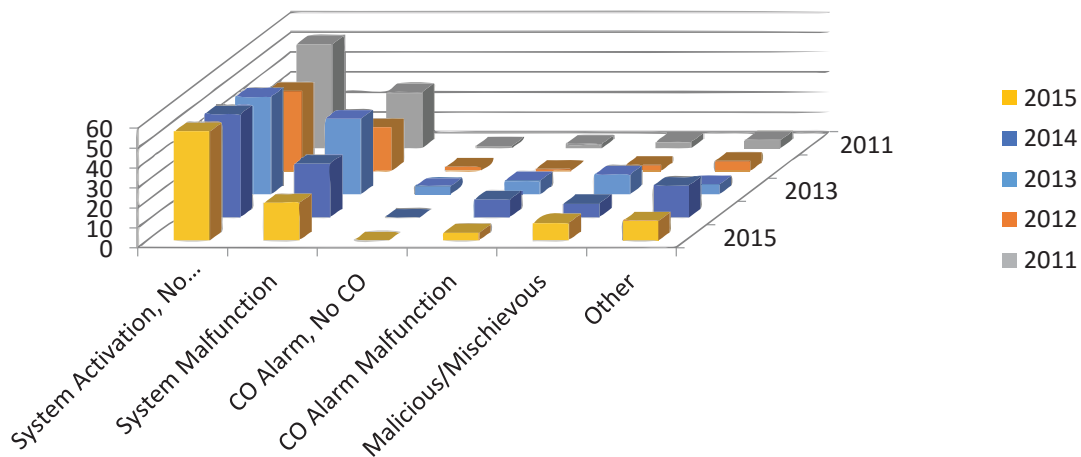
Municipal and Provincial growth have also affected the number of times we were called to incidents while already at an incident. This continues to trend upward forcing us to prioritize calls and call back staff more often.

ALARM LEVEL 2015



Alarm level speaks to the size of a response. A first alarm response is handled by the on-duty crew, a second alarm calls back the auxiliaries assigned to their platoon, a third alarm calls back the off duty crew and a fourth alarm calls back all personnel.

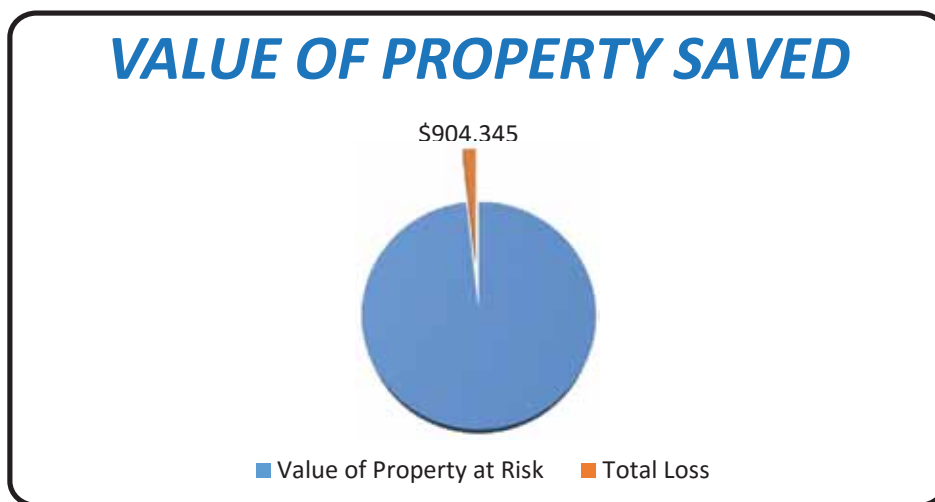
FALSE ALARMS



False alarms continue to be a problem for fire departments across Canada and the US and we are no different. We have a mechanism to fine property owners for multiple false alarms but there are loop holes in the Bylaw which we hope to close in 2016.



Although the trend line for fire losses is up in 2015, it is attributed to a series of arson fires in January. If these fires are removed, the trend line is actually downward.



The fire incidents we responded to put over \$46 million of property at risk with losses of \$904,345. This is a large increase over past years due to the arson fires in January.

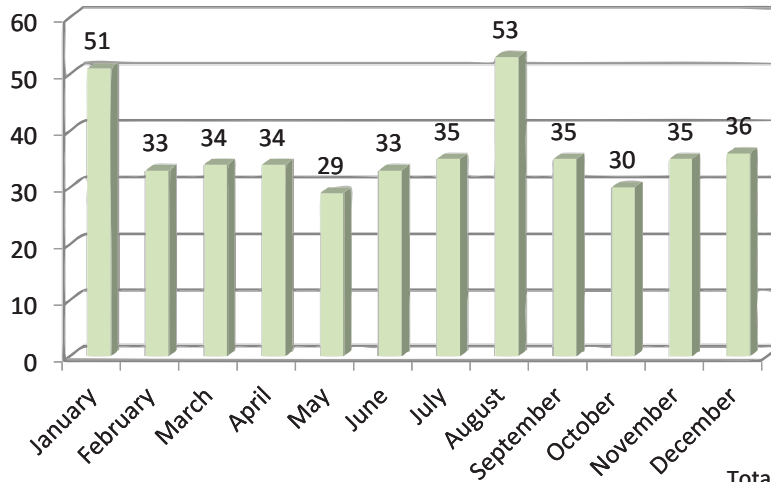
Rural Responses

	Fire	Vehicle Ext	Rescue	Hazmat	Other	Total	Dollar Loss
RM of Lac Pelletier # 107	1					1	\$600,000
RM of Swift Current # 137	4	5			6	15	\$159,000
RM Excelsior # 166	1	1			1	3	
RM of Saskatchewan Landing # 167		3				3	
RM of Riverside # 168		1			1	2	
					Total	24	

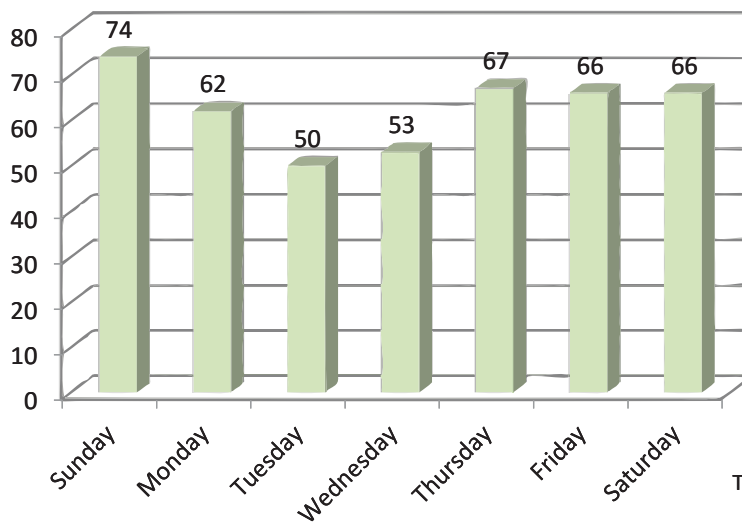
In 2015, we provided fire/rescue services to 5 of the municipalities with whom we have service agreements. The total number of calls was 24 with vehicle extrications comprising the biggest number of calls.

EMS RELATED RESPONSES

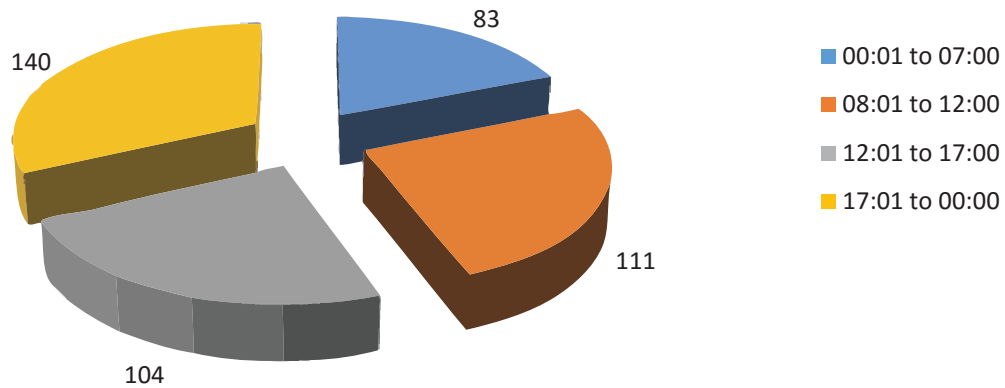
EMS INCIDENTS BY MONTH



EMS INCIDENTS BY DAY OF WEEK

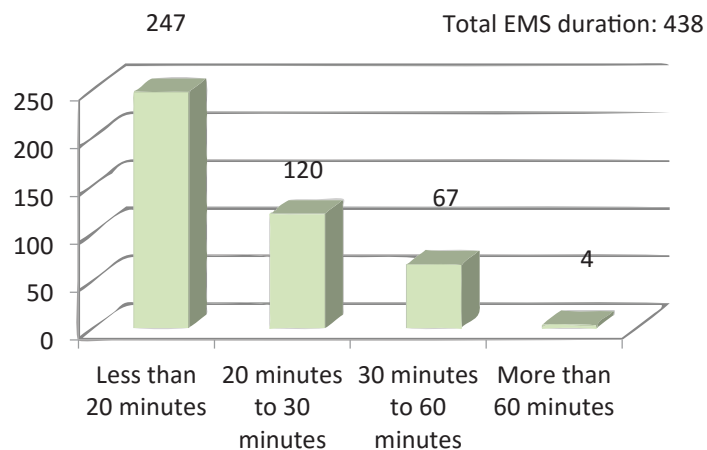


EMS INCIDENTS TIME OF DAY



EMS responses occur at all times and are more calls during the midnight to 7 AM time period are greater than fire calls during that period. Although there are a few anomalies such as January and August, call month, day and time trends are fairly straight lines.

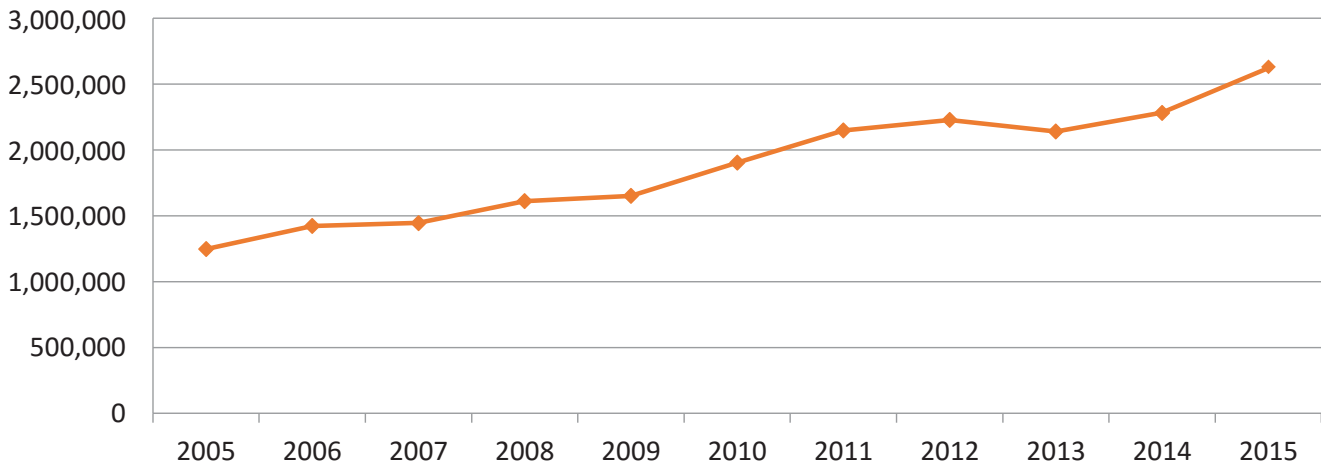
EMS INCIDENT DURATION



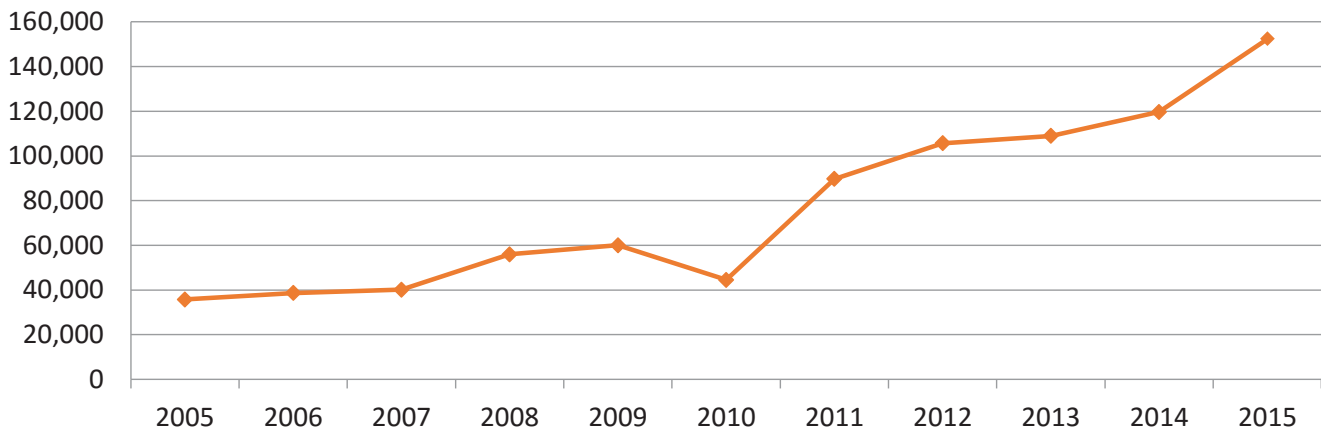
The duration of time spent on EMS calls is relatively short as we are assisting Swift Current Ambulance. Once the patient is loaded, we are normally cleared of the scene. The longer term calls are usually CPR related where one of our members rides in the back of the ambulance to assist in transport to the hospital.

Budget

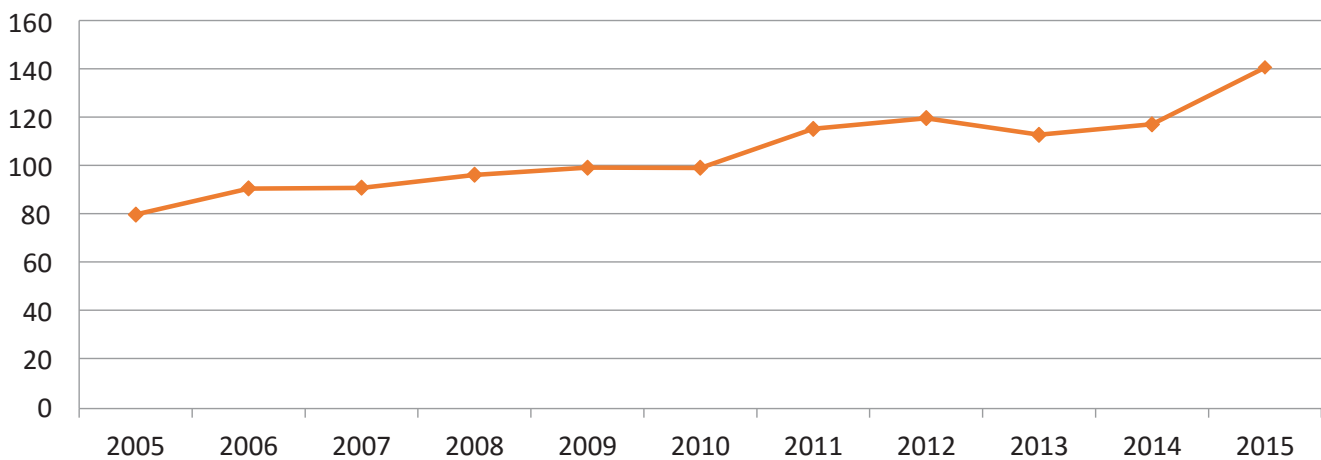
10 YEAR OPERATING BUDGET COMPARISON



10 YEAR REVENUE COMPARISON



10 YEAR COST PER CAPITA COMPARISON



Fire departments are very limited by provincial law in charging for services. Over the past 3 years we have developed some new sources of revenue which have helped offset the cost of operation.

OUR FLEET — APPARATUS'

Engine 3: This is a rescue pumper and is the first responding unit to any emergency in the city. This vehicle is used for fire suppression, vehicle extrication, and general rescue. It is also used for vehicle extrication outside city limits.

Vehicle ID	E3
Model	Fort Garry/Spartan
Year	2014
Age	2
Water Tank Cap.	2725 Litres
Pump Cap.	4000 L/min
Year of Replacement	2039
Hours in 2015	380
Kilometres in 2015	6134



Engine 2: This apparatus is the first unit responding to rural incidents and is the second unit for in-city incidents.

Vehicle ID	E2
Model	Fort Garry/Spartan
Year	2002
Age	14
Water Tank Cap.	2700 Litres
Pump Cap.	7000 L/min
Year of Replacement	2027
Hours in 2015	29
Kilometres in 2015	585



OUR FLEET — APPARATUS'

Ladder 2: This apparatus is used for elevated rescue and for firefighting. This unit can be also used as a fire pumper. The ladder length is 30 meters.

Vehicle ID	L2
Model	Fort Garry/Spartan
Year	2006
Age	10
Water Tank Cap.	1350 Litres
Pump Cap.	7000 L/min
Year of Replacement	2036
Hours in 2015	48
Kilometres in 2015	276



Tanker 2: This unit is used for water supply for our rural incidents and for incidents in the city where there are no hydrants. It can also be used as a fire pumper.

Vehicle ID	T2
Model	Fort Garry/Freightliner
Year	2013
Age	3
Water Tank Cap.	9100 Litres
Pump Cap.	5000 L/min
Year of Replacement	2038
Hours in 2015	28.5
Kilometres in 2015	703



Rescue 2: This unit is used for wildland firefighting and medical response.

Vehicle ID	U1
Model	Ford
Year	2008
Age	8
Water Tank Cap.	832 Litres
Pump Cap.	300 L/min
Year of Replacement	2023
Hours in 2014	418
Kilometres in 2014	8441



OUR FLEET — COMMAND VEHICLES



Command 1: This unit is used by the Deputy of Fire Prevention.



Command 2: This unit is used by the Fire Chief.



Command 3: This unit is used by the Deputy of Operations.

OUR FLEET — SUPPORT VEHICLES

Rescue 2: This trailer is used to store our specialty equipment for such things as high angle rescue, confined space rescue, and ice/water rescue.



HazMat 2: This trailer stores equipment and material used to mitigate fuel, oil, or other hazardous materials spills.



Rescue Boat: This unit will be used at times of high water levels in the Swift Current Creek and surrounding areas.



HISTORIC APPARATUS'

Ladder 1, 1929 Chevrolet



Pumper 4, 1940 Dodge Seagrave



Pumper 3, 1969 King



Contact Us:

Swift Current Fire Department

236 Chaplin St. East

Swift Current, SK S9H 5B2

Phone: 306.778.2760

Fax: 306.778.9191

fire@swiftcurrent.ca

Follow us on Twitter @CitySCFire

Like us on Facebook.com/SwiftCurrentFireDepartment

