



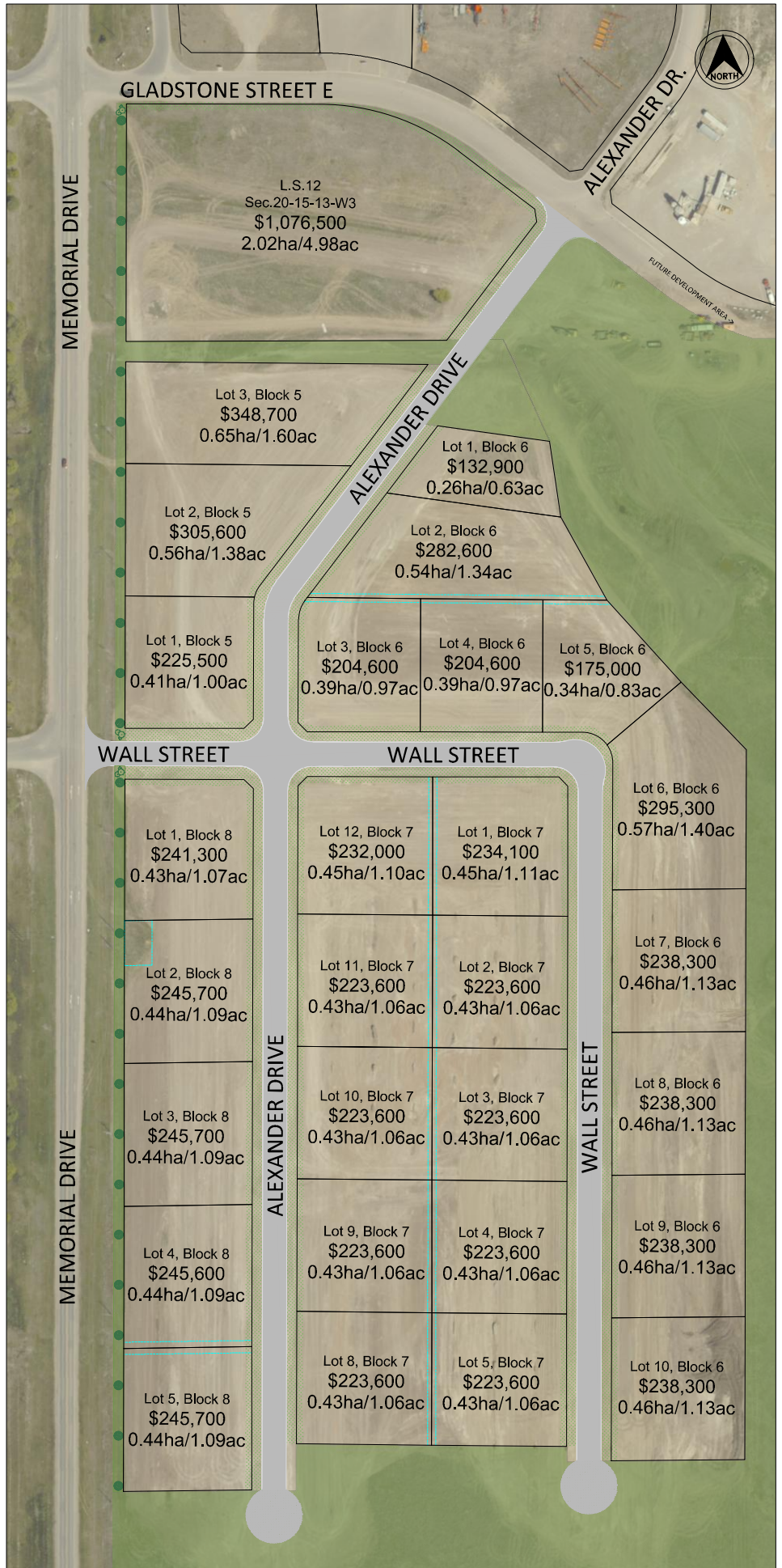
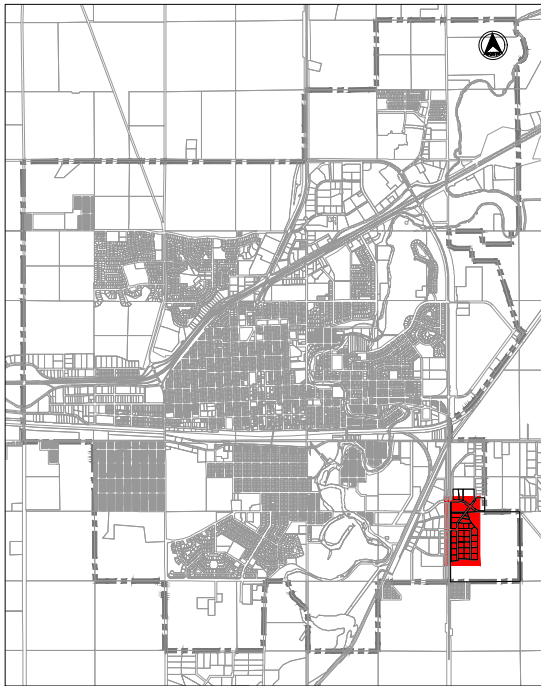
CITY OF SWIFT CURRENT

# SOUTH MUNRO INDUSTRIAL PARK

LOT SALES

Zoning District:

## M2 - Heavy Industrial



Swift Current Economic Development  
For more information, please contact:  
Marty Salberg

[m.salberg@swiftcurrent.ca](mailto:m.salberg@swiftcurrent.ca)

Office (306) 778-2700 | Mobile (306) 741-7947